

IN THIS ISSUE

HBRA NEWS

- Message from the Executive Officer p. 5
- Upcoming Events p. 7
- Membership Challenge p. 11
- International Builder Show p. 12
- Builder Roundtable p. 14
- PWB Meeting p. 15
- Beyond the Blueprint p. 16
- New Members p. 18
- LTW Stages Willis Home p. 22
- Member Directory p. 23
- Don Wetmore - One More Hour Per Day p. 34
- Dear Sales Coach p. 34
- Member Benefits p. 36



BUILDER NEWS

- FHA Eliminated 2 Lending Roadblocks p. 24
- App Creates Drone Deliverables in Hours p. 24
- 5 Challenges Builders Face in Meeting Current Energy Codes p. 25
- Home Remodeling is a \$450 Billion Market... p. 25
- What Happens When More Of Us Live Healthier Lives to Age 100 p. 25
- Women in Construction p. 25

NAHB NEWS

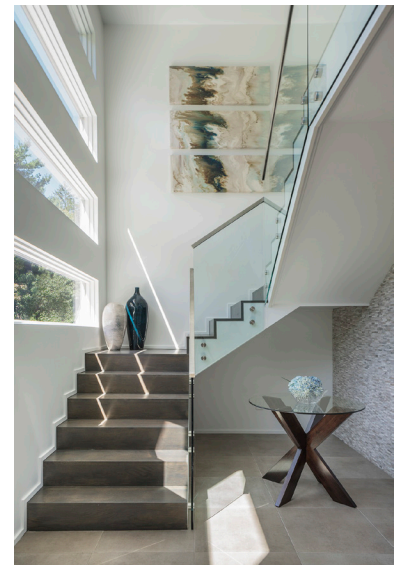
- Ugalde Prizes Measured Risk Taking p. 26
- Hearing Highlights Need to Resolve Trade Disputes p. 26
- Partnerships Expand Affordable Housing in CT p. 27
- New Home Sales End Year +1.5 Percent p. 27
- Lawmakers Introduce Bull To Help Ease Labor Shortage p. 28
- Walk-in Pantry Most Wanted Kitchen Feature

STATE NEWS

- Taxing Home Repairs and Renovations is Bad Policy p. 31
- Legislative Updates p. 32
- CT & Fairfield County Permit Data p. 33

Advertisers:

- | | | | | | |
|-------------------------|-------|------------------------|-------|-----------------------|-------|
| County TV & Appliance | p. 6 | Huber Engineered Woods | p. 26 | Ridgefield Supply | p. 35 |
| Stamford Museum | p. 14 | United Bank | p. 27 | First County Bank | p. 37 |
| GoTasker | p. 15 | Interstate Lumber | p. 28 | Fairfield County Bank | p. 38 |
| Pella Windows and Doors | p. 19 | Acadia Insurance | p. 29 | CTC&G | p. 39 |
| DiMatteo | p. 22 | Toohar Ferraris | p. 30 | Ring's End | p. 40 |
| Chloe Winston | p. 23 | Ed's Garage Door | p. 33 | | |



ON THE COVER

Emilia Ferri Architecture + Design

Emilia Ferri

www.emiliaferridesign.com